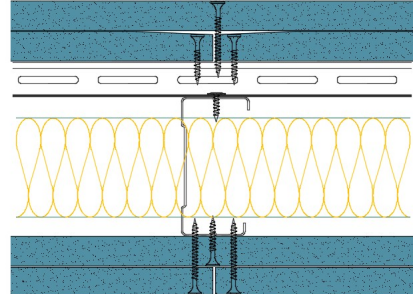


RB70-S-60(50) - SPEEDLINE System Data Sheet - Version V1 (24-10-23)

SPEEDLINE 70mm 'C' Stud Partition with Resbar
@600mm Ctrs, with 2x Siniat GTEC 15mm dB
Board each side, 50mm APR



System Performance Breakdown

Fire Resistance:

BS476 Part 22:1987:

Test Ref & Date or Applied Ref & Report:

Max Height:

Thickness:

Duty Grade: BS 5234: Part 2:1992:

Sound Insulation:

90/90 Minutes (Integrity/Insulation).

BRE-P100456-1085 - BRE Report P102396-1011C

Refer to Speedline Specification Clause

148 mm. (At Base Track, Excluding Finishes)

Severe - Annexes A-F

61 R_wdB, -7Ctr Date Tested or Assessed Against - 08/03/2005

LABORATORY AIRBORNE SOUND INSULATION TEST - BS EN ISO 140-3:1996											
Test Code: H13803AA		Test Date: 08/03/05									
Specimen Area, S = 8.64 m²		Room Volume, m ³ :		Room T2	Room T1						
		Temperature, deg.C:		98	60.3						
		Rel. Humidity, %RH:		14.1	13.3						
				45.8	44.9						
Freq Hz	Test Room T2 to Test Room T1							R dB	U.Dev. dB	R 1/1 Oct dB	
	Source dB	Rec. (u) dB	Bgmd dB	Rec. (corr) dB	Rev.time Sec	Corr. dB					
50	59.4	33.5	23.2	33.1	0.98	-2.3	24.0				
63	64.0	44.2	18.3	44.2	0.70	-2.0	17.8			19.4	
80	66.3	45.2	14.5	45.2	0.83	-2.5	18.6				
100	75.7	37.4	16.2	37.4	0.84	-1.2	37.1	4.9			
125	78.4	37.2	13.0	37.2	1.12	0.0	41.2	3.8		40.1	
160	85.6	40.3	10.4	40.3	1.30	0.7	46.0	2.0			
200	92.6	41.7	12.9	41.7	1.22	0.4	51.3				
250	95.0	42.4	9.2	42.4	1.37	0.9	53.5	0.5		53.4	
315	95.2	38.8	18.2	38.8	1.45	1.1	57.5				
400	93.0	34.0	19.0	33.9	1.23	0.4	60.1				
500	91.7	29.4	11.9	29.4	1.12	0.0	62.3			62.1	
630	90.5	28.1	13.8	28.8	1.28	0.6	65.3				
800	91.3	25.5	12.3	25.3	1.38	0.9	66.9				
1000	90.6	24.0	10.8	23.8	1.51	1.3	68.1			67.9	
1250	91.8	24.6	7.3	24.6	1.65	1.7	68.9				
1600	94.4	28.3	10.3	28.3	1.67	1.7	67.8				
2000	96.0	37.0	10.3	37.0	1.49	1.3	60.3	4.7		61.2	
2500	94.1	35.7	7.6	35.7	1.38	0.9	59.3	5.7			
3150	92.5	31.0	8.8	31.0	1.32	0.7	62.2	2.8			
4000	90.8	25.8	8.9	25.8	1.26	0.5	65.5			64.7	
5000	89.7	21.4	9.8	21.1	1.09	-0.1	68.5				
6300											
8000											
10000											
Single Figure Ratings		RW	C	Ctr	Total U. Dev., dB			24.4			
BS EN ISO 717-1: 1997		dB	dB	dB							
		61	-2	-7							
Background Corrected		(100-5000)	-1	-7							
		(50-3150)	-12	-24							
		(50-5000)	-11	-24							
Test Procedure: 140-3/Issue 6 Worksheet: 140_3_1.XLS											


TESTED AT ONE OF THE UKAS ACCREDITED LABORATORIES BELOW

B.T.C
(H-Ref on Graph)

B.R.E

AIRO

S.R.L



Customer: Hepsec

BTC 13803A: Page 8 of 10

